

TENABLE FOR SPLUNK

Enhance Operational Intelligence with IT and OT Vulnerability Insights



Technology Components

- Tenable Vulnerability Management, Tenable Security Center, Tenable Web App Scanning, Tenable OT Security, Tenable Identity Exposure
- Tenable Add-On for Splunk
- Tenable Web App Scanning Add-On for Splunk
- Tenable.asm for Splunk
- Splunk Enterprise
- Splunk Cloud
- Tenable App for Splunk (optional)
- Splunk Enterprise Security (optional)
- CIM 4.X

Key Benefits

- Automatically sync Tenable data into Splunk
- Ensure all assets are known
- Automate closed-loop remediation
- Improve remediation decision making with vulnerability insights

Business Challenge

Organizations depend on Splunk to harness operational IT, OT and Active Directory (AD) data to detect and respond quickly to threats. Without the ability to integrate critical vulnerability intelligence into the Splunk platform, security leaders are at risk of weakening incident investigations by not having full security context to take the right actions.

Solution

The Tenable[®] integrations with Splunk combine Tenable's Exposure insights with Splunk's correlation capabilities for complete visibility into all assets across the modern attack surface and their potential vulnerabilities, misconfigurations and unpatched components in a unified threat detection, investigation, and response single analytics platform. Using Tenable and Splunk together enables joint customers to sync IT, OT and AD vulnerability information, prioritize vulnerability remediation based on actual risk, request a remediation scan and view the latest vulnerability summary for a machine during an investigation.

Value

The Tenable integration for Splunk provides the ability to:

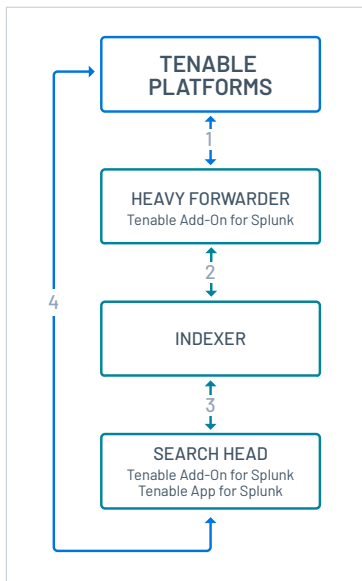
- Discover additional hosts that were previously unknown to Splunk
- Enrich existing events with vulnerability context and state information
- Centralize vulnerability alerting and reporting
- Respond faster to the most critical vulnerabilities with Predictive Prioritization
- Utilize Adaptive Response Actions with Splunk Enterprise Security (optional)

Features

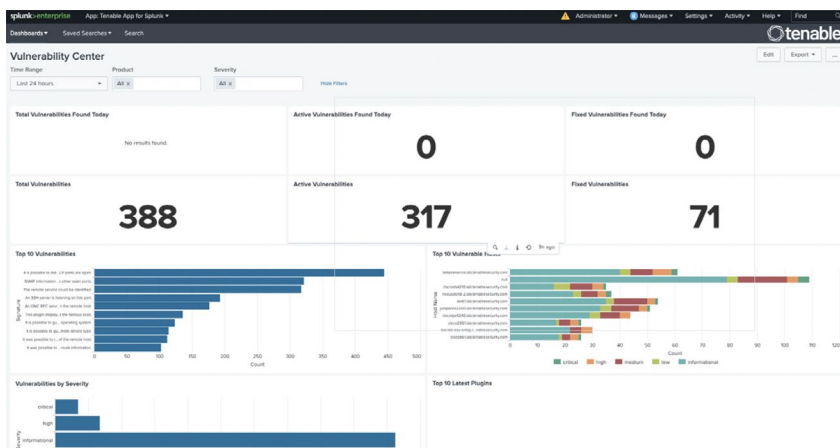
With this integration, you can:

- Sync vulnerability information, including state from Tenable platforms
- Prioritize remediation based on the likelihood of a vulnerability being exploited
- Scan a host during an investigation
- Request a remediation scan during an investigation (Tenable Security Center)
- Get the latest vulnerability summary for a host during an investigation
- View a single dashboard with configured vulnerability feeds

How it works



1. All vulnerabilities are gathered from Tenable
2. Tenable data is indexed into Splunk
3. Tenable data is searchable and reportable in default Splunk reports and the Tenable App for Splunk
4. Adaptive Response actions can be invoked to enrich Splunk Enterprise notable events



TENABLE APP FOR SPLUNK VULNERABILITY DASHBOARD

About Tenable

Tenable® is the Exposure Management company.

Approximately 40,000 organizations around the globe rely on Tenable to understand and reduce cyber risk. As the creator of Nessus®, Tenable extended its expertise in vulnerabilities to deliver the world's first platform to see and secure any digital asset on any computing platform. Tenable customers include approximately 60 percent of the Fortune 500, approximately 40 percent of the Global 2000, and large government agencies. Learn more at www.tenable.com.

About Splunk

Splunk Inc. (NASDAQ: SPLK) is a technology company that provides the leading unified security and observability platform. It helps organizations use data at any scale to become more secure and resilient so they can innovate with speed and agility. Learn more at splunk.com.

More Information

Tenable Add-on and App for Splunk: www.splunkbase.splunk.com

Installation and configuration documentation: docs.tenable.com/integrations/Splunk/Content/Welcome.htm

For support please visit: www.community.tenable.com/s/



COPYRIGHT 2024 TENABLE, INC. ALL RIGHTS RESERVED. TENABLE, NESSUS, LUMIN, ASSURE, AND THE TENABLE LOGO ARE REGISTERED TRADEMARKS OF TENABLE, INC. OR ITS AFFILIATES. ALL OTHER PRODUCTS OR SERVICES ARE TRADEMARKS OF THEIR RESPECTIVE OWNERS.